



Department of Labor, Licensing and Regulation

**Division of Workforce Development  
and Adult Learning**

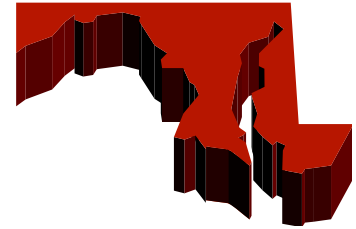


# An Introduction to Labor Market Information

*Understanding & Using LMI in Career Planning*



# Workshop objectives



## To familiarize participants with labor market information (LMI) and its use

- learn about some key LMI programs of the federal government and state offices
- understand LMI terminology and concepts
- be able to understand and interpret the numbers
- gain insight into some job market trends and occupational forecasts
- be able to incorporate LMI into the career planning process

# What is Labor Market Information (LMI)?

Data, reports, research...

that count, describe, analyze or forecast:

- the labor force, the employed, the unemployed
- occupations & industries
- wages, salaries, earnings



...by geographic area...

U.S., states, counties, metro areas, cities,  
Workforce Investment Areas (WIA's)

... and are used to understand the job market and  
how it functions

# Why use Labor Market Information?

## To get to know the job market

- Is area unemployment generally high or low? Subject to seasonal influences? Strong business cycle affects?
- What are the largest industries? Which are expanding? Contracting? Restructuring?
- What are the top occupations? Which are growing? Declining? What do they pay? Skills/education needed?

## To help clients make more informed career decisions

- Guide career choices
- Set realistic expectations for job search, earnings
- Develop work search plans



# LMI Sources

**Bureau of Labor Statistics (BLS), U.S. Dept. of Labor**

[www.bls.gov](http://www.bls.gov)

**Employment & Training Administration (ETA), USDOL**

[www.doleta.gov](http://www.doleta.gov)

**Census Bureau, U.S. Dept of Commerce**

[www.census.gov](http://www.census.gov)



**Maryland**

**DLLR Office of Workforce Information & Performance**

[www.maryland.gov/lmi](http://www.maryland.gov/lmi)

[mwejobs.maryland.gov](http://mwejobs.maryland.gov)

# Two major LMI areas we will cover :

## Labor force data

- estimates of the employed & unemployed
- counted by place of residence

## Jobs data

- estimates of employment by industry
- estimates of employment by occupation
- projections of future occupations
- counted by place of work



# Labor Force - Definitions



## Labor Force

Employed + unemployed, 16 years & older

Based on place of residence

## Employed

Persons working for pay or profit, full or part time

## Unemployed

Persons without a job, available and looking for work

## Unemployment Rate

Percent of the labor force that is unemployed



# Labor Force

## Data Sources:



### Current Population Survey (CPS)

national monthly household survey  
produces national labor force estimates  
used to develop state & local area estimates

### Local Area Unemployment Statistics (LAUS)

federal-state cooperative data program  
produces state & local area labor force data

# Labor Force Status

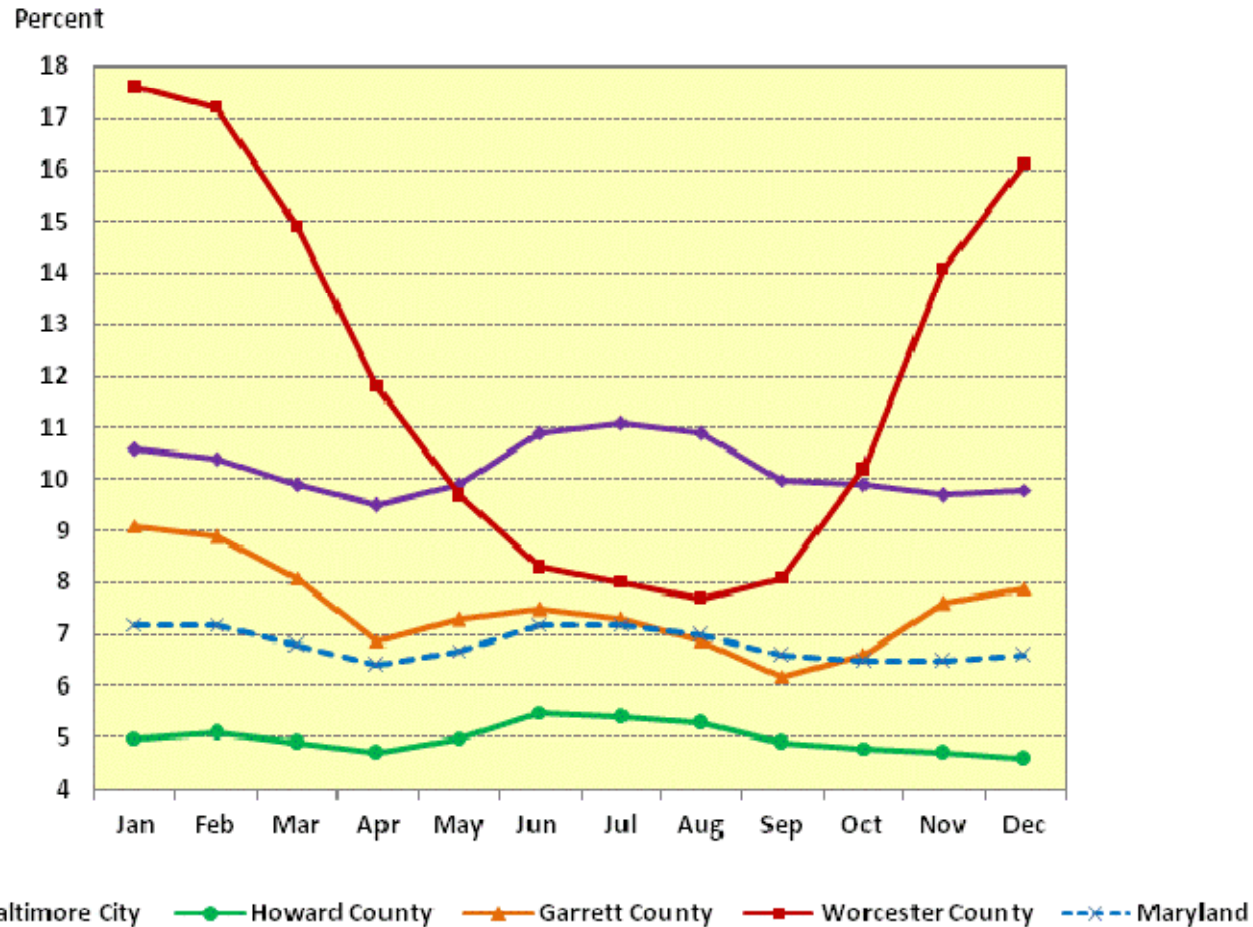
Civilian Labor Force, Employment, and Unemployment By Place of Residence February 2013								
Area	Civilian Labor Force		Employment		Unemployment		Unemployment Rate	
	Feb 2013	Jan 2013r	Feb 2013	Jan 2013r	Feb 2013	Jan 2013r	Feb 2013	Jan 2013r
<b>Seasonally Adjusted</b>								
Maryland	3,142,614	3,143,218	2,934,237	2,932,319	208,377	210,899	6.6	6.7
United States*	155,524,000	155,654,000	143,492,000	143,322,000	12,032,000	12,332,000	7.7	7.9
<b>Not Seasonally Adjusted</b>								
Maryland	3,115,355	3,117,200	2,901,800	2,893,662	213,555	223,538	6.9	7.2
<b>Baltimore-Towson MSA</b>	<b>1,478,154</b>	<b>1,477,699</b>	<b>1,372,566</b>	<b>1,367,417</b>	<b>105,588</b>	<b>110,282</b>	<b>7.1</b>	<b>7.5</b>
Baltimore City	279,113	280,320	251,744	250,800	27,369	29,520	9.8	10.5
Anne Arundel	305,990	305,482	287,552	286,473	18,438	19,009	6.0	6.2
Baltimore	454,590	454,271	421,372	419,791	33,218	34,480	7.3	7.6
Carroll	96,013	95,917	89,877	89,540	6,136	6,377	6.4	6.6
Harford	140,493	140,174	130,282	129,793	10,211	10,381	7.3	7.4
Howard	174,055	173,697	165,638	165,017	8,417	8,680	4.8	5.0
Queen Anne's	27,901	27,839	26,101	26,003	1,800	1,836	6.5	6.6
<b>Washington-Arlington-Alexandria, DC-VA-MD-WV Metro Division, MD</b>	<b>593,728</b>	<b>593,239</b>	<b>554,973</b>	<b>552,784</b>	<b>38,755</b>	<b>40,455</b>	<b>6.5</b>	<b>6.8</b>
Calvert	47,761	47,664	45,063	44,885	2,698	2,779	5.6	5.8
Charles	80,263	79,970	75,343	75,046	4,920	4,924	6.1	6.2
Prince George's	465,704	465,604	434,567	432,852	31,137	32,752	6.7	7.0
<b>Bethesda-Frederick-Rockville Metro Div</b>	<b>662,583</b>	<b>663,496</b>	<b>628,201</b>	<b>627,736</b>	<b>34,382</b>	<b>35,760</b>	<b>5.2</b>	<b>5.4</b>
Frederick	129,294	129,427	121,506	121,416	7,788	8,011	6.0	6.2
Montgomery	533,289	534,069	506,695	506,320	26,594	27,749	5.0	5.2

← seasonally adjusted

← unadjusted

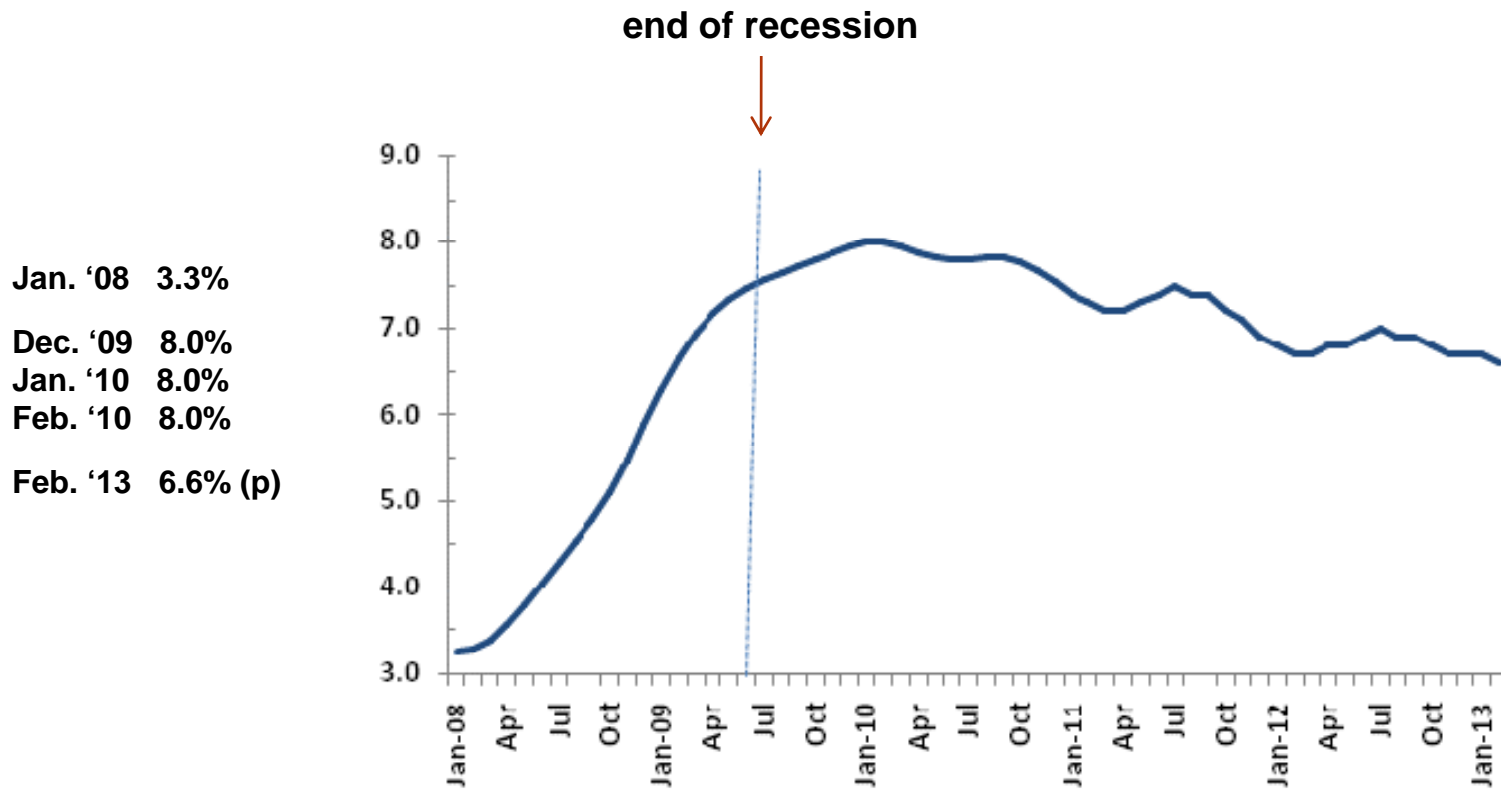
# Unemployment - seasonal changes

2011 rates by month



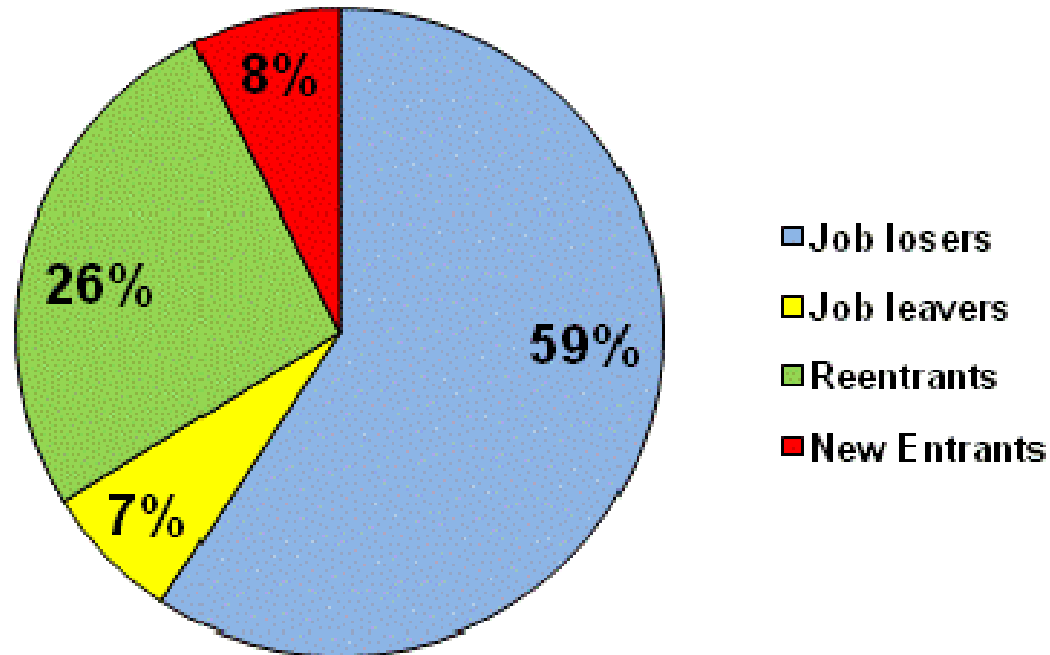
# Unemployment - cyclical effects

## Recession & aftermath in Maryland



# Reasons for Unemployment

Maryland 2011



Source: Current Population Survey

# Industry Employment - Jobs



- Based on place of work, counted by industry includes both full & part time jobs
- Also known as: nonagricultural, nonfarm, payroll, at-place, establishment, wage & salary, or covered (UI) employment

## Industry data programs:

Quarterly Census of Employment & Wages (QCEW) – counts employers’ UI reported jobs each quarter

Current Employment Statistics (CES) – monthly survey of employers to create current jobs estimates; “news headline” employment is seasonally adjusted

# North American Industry Classification System (NAICS)

Hierarchical system categorizes industries by:

**SECTOR**

**SUBSECTOR**

**INDUSTRY GROUP**

**INDUSTRY**

**DETAIL INDUSTRY**

- assigned codes of 2 to 6 digits, depending on detail
- sectors may be aggregated into supersectors

## NAICS example:

Industry Title	NAICS Code
<b>HEALTHCARE &amp; SOCIAL ASSISTANCE</b>	<b>62</b>
<b>AMBULATORY HEALTH CARE SERVICES</b>	<b>621</b>
<b>OUTPATIENT CARE CENTERS</b>	<b>6214</b>
<b>OTHER OUTPATIENT CARE CENTERS</b>	<b>62149</b>
<b>HMO MEDICAL CENTERS</b>	<b>621491</b>

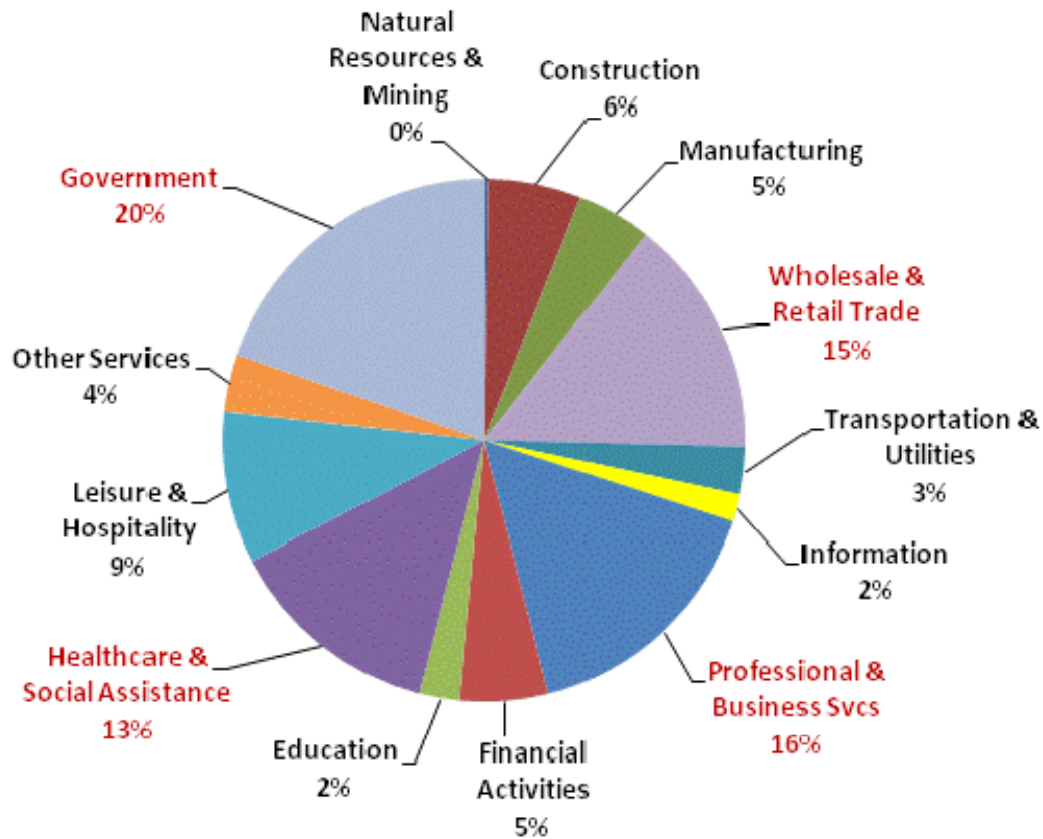




# Industry Employment & Wages - QCEW

Industry	FIRST QUARTER 2012						
	Number of Reporting Units	Monthly Employment			Quarterly Average Employment	Total Wages	Average Weekly Wage Per Worker
		First	Second	Third			
<b>Calvert County</b>							
<b>TOTAL EMPLOYMENT</b>	1,866	20,913	21,209	21,348	21,157	\$241,616,769	\$878
<b>GOVERNMENT SECTOR - TOTAL</b>	65	4,091	4,227	4,233	4,184	55,007,589	1,011
Federal Government	25	144	141	138	141	2,767,603	1,510
State Government	9	279	283	282	281	2,960,154	810
Local Government	31	3,668	3,803	3,813	3,761	49,279,832	1,008
<b>PRIVATE SECTOR - TOTAL ALL INDUSTRIES</b>	1,801	16,822	16,982	17,115	16,973	186,609,180	846
<b>GOODS-PRODUCING</b>	424	2,409	2,394	2,417	2,407	26,319,540	841
Natural Resources and Mining	6	44	45	46	45	428,590	733
Construction	366	1,780	1,764	1,786	1,777	19,635,443	850
Manufacturing	52	585	585	585	585	6,255,507	823
<b>SERVICE PROVIDING</b>	1,377	14,413	14,588	14,698	14,566	160,289,640	846
Trade, Transportation, and Utilities	329	4,587	4,593	4,597	4,592	68,825,185	1,153
Information	15	121	122	118	120	1,474,813	945
Financial Activities	162	617	592	618	609	7,306,781	923
Professional and Business Services	331	1,895	2,116	2,040	2,017	26,884,890	1,025
Education and Health Services	214	3,641	3,614	3,626	3,627	38,517,265	817
Leisure and Hospitality	172	2,805	2,793	2,940	2,846	11,811,273	319
Other Services	154	747	758	759	755	5,469,433	557

# Employment Shares by Industry Sector



Maryland 2011 Annual Averages

# Maryland's Top Growth Industries 2011Q2 - 2012Q2

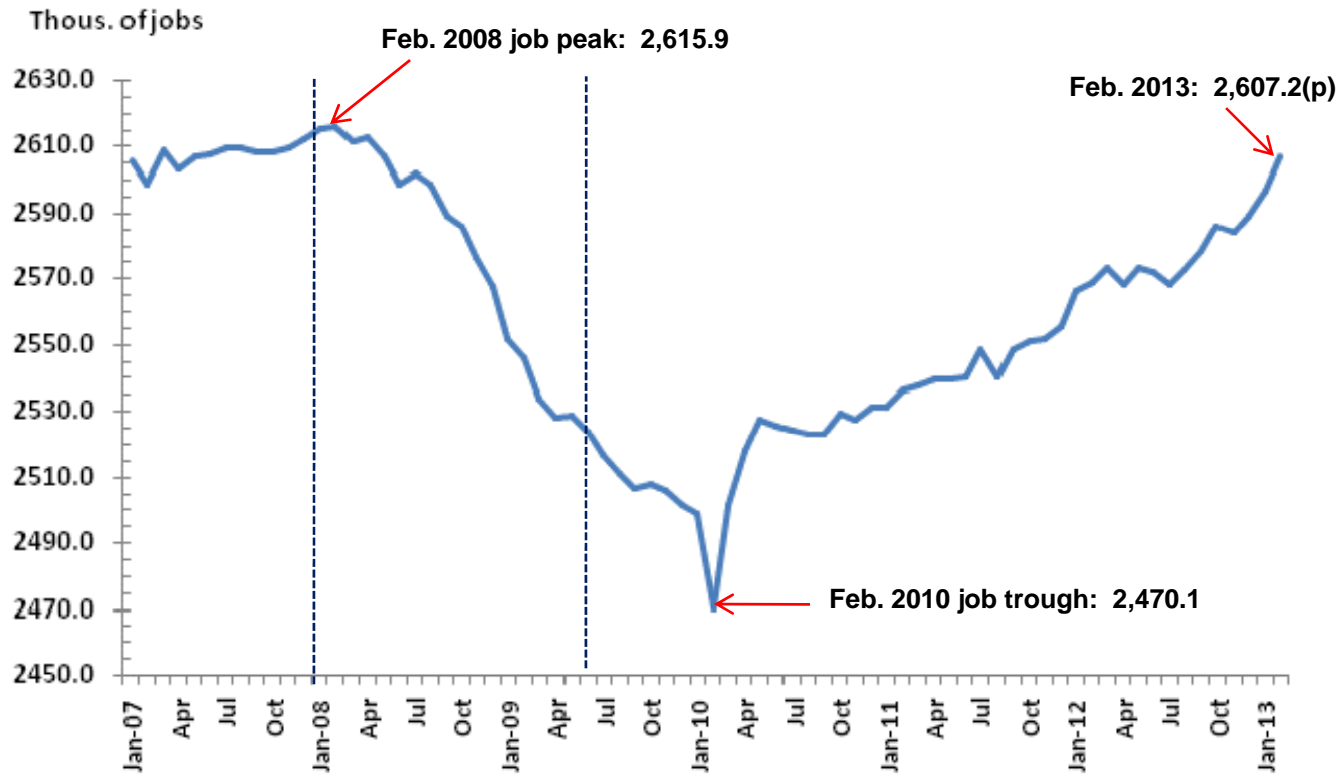
NAICS	Industry Title	Job Growth
7221	Restaurants	7,557
6221	General medical & surgical hospitals	4,321
5613	Employment services	3,473
9281	National security & internat'l affairs	3,009
5415	Computer systems design & related	1,935
6113	Colleges & universities	1,744
6211	Physicians offices	1,336
6216	Home health care services	1,321

# Monthly Employment Estimates (CES)

Nonagricultural Payroll Employment* By Industry By Place of Employment (in thousands) Seasonally Adjusted February 2013				
	Feb 2013	Jan 2013r	Feb 2012	Percent Change Feb 2012- Feb 2013
<b>MARYLAND</b>				
<b>Total Nonfarm</b>	<b>2,607.2</b>	<b>2,596.7</b>	<b>2,569.0</b>	<b>1.5</b>
Natural Resources, Mining & Construction	150.1	149.4	146.0	2.8
Manufacturing	105.8	105.4	110.3	-4.1
Durable Goods	56.6	56.3	59.3	-4.6
Nondurable Goods	49.2	49.1	51.0	-3.5
Trade, Transportation, Warehousing, Utilities	450.2	449.7	450.0	0.0
Wholesale Trade	87.0	86.2	86.1	1.0
Retail Trade	282.9	283.5	285.1	-0.8
Transportation, Warehousing, & Utilities	80.3	80.0	78.8	1.9
Information	39.9	40.2	40.3	-1.0
Financial Activities	145.0	144.0	143.0	1.4
Finance and Insurance	99.8	99.2	99.9	-0.1
Real Estate & Rental & Leasing	45.2	44.8	43.1	4.9
Professional and Business Services	420.2	418.3	407.0	3.2
Professional, Scientific, & Technical Services	242.0	238.5	233.0	3.9
Management of Companies & Enterprises	24.5	24.3	24.5	0.0
Administrative & Support Services	153.7	155.5	149.5	2.8
Educational & Health Care & Social Assistance	423.6	422.7	411.7	2.9
Educational Services	76.1	75.2	74.8	1.7
Health Care & Social Assistance	347.5	347.5	336.9	3.1
Leisure & Hospitality	251.0	251.0	241.7	3.8
Arts, Entertainment, & Recreation	39.7	40.7	37.3	6.4
Accommodation & Food Services	211.3	210.3	204.4	3.4
Other Services	113.2	112.3	112.8	0.4
Government	508.2	503.7	506.2	0.4
Federal Government	145.5	145.2	146.8	-0.9
State Government	110.4	111.6	113.4	-2.6
Local Government	252.3	246.9	246.0	2.6

# Charting employment over time using the CES

### Maryland Payroll Employment, SA



# Local Employment Dynamics (LED)

you are here: [Census.gov](#) > [Business & Industry](#) > [Center for Economic Studies](#) > [Longitudinal Employer-Household Dynamics](#)

## Longitudinal Employer-Household Dynamics

Main Applications Data Learn More Research State Partners Partner with Us

### Applications

- ➔ OnTheMap
- ➔ OnTheMap for Emergency Management
- ➔ LED Extraction Tool
- ➔ QWI Online
- ➔ Industry Focus

### Useful Links

- Center for Economic Studies
- QWI
- Cornell VirtualRDC
- LED Workshop
- CED HotReport

### Contact Information

Email us:  
[CES.Local.Employment.Dynamics@census.gov](mailto:CES.Local.Employment.Dynamics@census.gov)

### Get the LED Out!

The new LED Extraction Tool allows streamlined access to the entire set of raw Quarterly Workforce Indicators (QWI) data through an intuitive query-building interface.

[Learn more](#) (76 KB)

[Start the LED Extraction Tool](#)

< 1 2 3 4 5 >

The screenshot shows the 'LED Extraction Tool (Beta)' interface. It features a navigation bar with steps: 1. Area of Interest, 2. Firm Characteristics, 3. Worker Characteristics, 4. Indicators, 5. Quarters, 6. Summary and Export. The main content area is titled 'Alabama' and shows a list of 'Geography Types' including States, Counties, Micro/Metropolitan Area, and Workforce Investment Areas. Under 'Counties', several counties are listed with checkboxes, such as 01001 Autauga, AL, 01003 Baldwin, AL, etc. A 'Continue with Selected Areas' button is visible at the bottom right.

### What's New?

- 03/28/13: [Get the LED Out! Beta Version of LED Extraction Tool Released](#)
- 03/26/13: [Upcoming changes to QWI Public Use files \(QWI/PU\)](#)

# LED Quarterly Workforce Indicators

Choose from 1 of 3 workforce groupings & 2 firm classifications

All Firm Ages and Sizes Private Employment - by Firm Age Private Employment - by Firm Size

AgeGroup/Sex Education/Sex Race/Ethnicity

## LEHD State of Maryland County Reports - Quarterly Workforce Indicators

Select Criteria below. A new report will be created below as selections change.

Year  Geographic Grouping  or [Information by Detailed Industry](#)  
 Quarter  County   
 Sex  Industry   
 AgeGroup  Ownership

Select geography type, then area

Choose time period

Select worker demographic group

Choose industry sector

[Download Dataset](#) [Print Table](#)

QWI Quick Facts	Frederick (Q1)	Frederick (Avg: Selected + 3 Prior qtrs)	Maryland (Q1)	Maryland (Avg: Selected + 3 Prior qtrs)
Total Employment	1,443	1,420	43,373	43,093
Net Job Flows	-11	-10	-560	-494
Job Creation	40	40	1,130	1,024
New Hires	67	67	1,913	1,780
Separations	94	92	2,787	2,698
Turnover	4.0%	4.3%	4.2%	4.0%
Avg Monthly Earnings	\$3,340.00	\$3,383.50	\$3,937.00	\$3,921.50
Avg New Hire Earnings	\$1,765.00	\$2,115.00	\$2,892.00	\$2,984.50

[View Detailed Comparison Reports](#)

Quick Facts refer to selected worker group, area, and industry

# LED Industry Focus

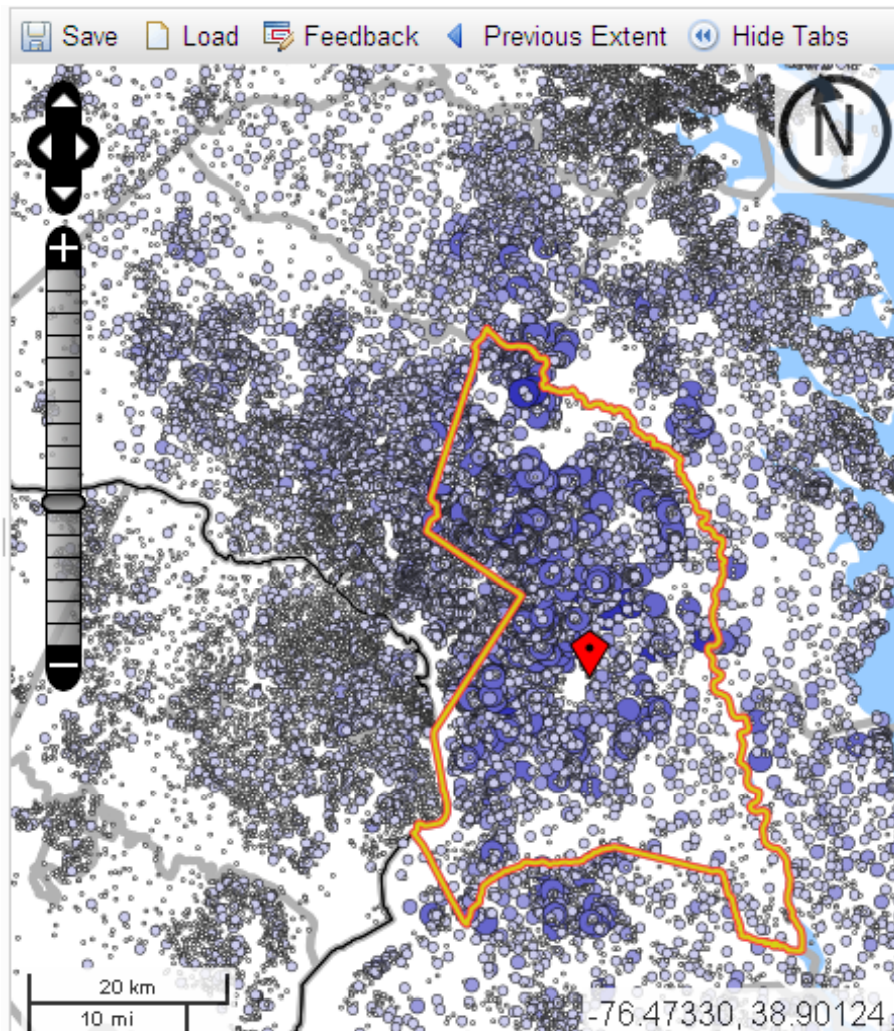
**High Growth Industries**  
**Top 10 industries ranked on the greatest employment**  
*State=Maryland, WIA=11 Upper Shore WIA, Sex=Male, Education=Some college or associate degree*  
**Private Firms Only**

Rank	Industry	Average Quarterly Employment (2011Q2,2011Q3, 2011Q4,2012Q1)	New Hire Earnings (\$) (2011Q2,2011Q3, 2011Q4,2012Q1)
	All NAICS subsectors	5,590	\$2,999
1	238 Specialty Trade Contractors	384	\$3,551
2	541 Professional, Scientific, and Technical Services	331	\$6,303
3	722 Food Services and Drinking Places	328	\$1,538
4	561 Administrative and Support Services	306	\$2,008
5	311 Food Manufacturing	284	\$2,390
6	423 Merchant Wholesalers, Durable Goods	246	\$3,188
7	424 Merchant Wholesalers, Nondurable Goods	179	\$4,236
8	445 Food and Beverage Stores	173	\$1,814
9	811 Repair and Maintenance	173	\$2,655
10	236 Construction of Buildings	169	\$2,768

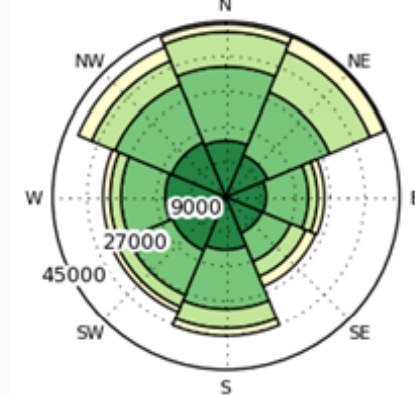
Source: U.S. Census Bureau, Local Employment Dynamics



# LED OTM – Prince George’s commuting



Job Counts by Distance/Direction in 2010  
All Workers



View as

Jobs by Distance - Work Census Block to Home  
Census Block

	2010	
	Count	Share
<b>Total Primary Jobs</b>	281,480	100.0%
<a href="#">Less than 10 miles</a>	106,788	37.9%
<a href="#">10 to 24 miles</a>	110,426	39.2%
<a href="#">25 to 50 miles</a>	44,625	15.9%
<a href="#">Greater than 50 miles</a>	19,641	7.0%

# Occupation & Wage Data



## Data Source :

### Occupational Employment Statistics (OES) program

- A federal-state cooperative data program, surveys employers in all industries, of all sizes
- OES produces:
  - estimates of jobs by occupation
  - average, median, wage ranges by occupation
  - state & WIA estimates for occupations & wages
  - national staffing patterns by industry on BLS website
- OES used to develop occupational projections

# Standard Occupational Classification System (SOC)

Classifies occupations for the purpose of collecting, calculating, and disseminating jobs data

**MAJOR OCCUPATIONAL GROUP**

**MINOR GROUP**

**BROAD OCCUPATIONS**

**DETAILED OCCUPATIONS**

- Occupations or groups are assigned codes of 2 to 6 digits, depending on level of detail

# Occupations & Wages

## Montgomery County WIA

	Occupation	Occ. code	Est. empl.	Mean wage	Entry wage	Exp. wage	Median wage
<b>MAJOR GROUP</b>	<b>ARCHITECTURE AND ENGINEERING OCCUPATIONS</b>	17-0000	11,800	95,100	55,375	114,975	91,325
				45.75	26.50	55.25	44.00
<b>MINOR GROUP</b>	Architects, Surveyors, and Cartographers	17-1000	1,260				
	Architects, Except Landscape and Naval	17-1011	570	88,575	61,575	102,050	83,300
				42.50	29.50	49.00	40.00
	Landscape Architects	17-1012		59,450	34,350	72,025	38,025
				28.50	16.50	34.50	18.25
	Cartographers and Photogrammetrists	17-1021	250	84,775	54,675	99,825	86,550
				40.75	26.25	48.00	41.50
	Surveyors	17-1022	180	73,175	40,750	89,400	58,925
				35.25	19.50	43.00	28.25
<b>MINOR GROUP</b>	Engineers	17-2000	8,080				
	Aerospace Engineers	17-2011	250	151,650	83,375	185,775	116,450
				73.00	40.00	89.25	56.00
	Biomedical Engineers	17-2031	260	93,825	66,675	107,425	92,575
				45.00	32.00	51.75	44.50
	Chemical Engineers	17-2041	120	103,125	71,325	119,025	103,925
				49.50	34.25	57.25	50.00
	Civil Engineers	17-2051	1,100	98,475	57,075	119,175	90,675
				47.25	27.50	57.25	43.50
	Computer Hardware Engineers	17-2061	1,090	100,100	65,175	117,575	98,725
				48.25	31.25	56.50	47.50
	Electrical Engineers	17-2071	1,030	96,700	63,550	113,275	98,300
				46.50	30.50	54.50	47.25
	Electronics Engineers, Except Computer	17-2072	570	112,875	83,275	127,650	116,050
				54.25	40.00	61.25	55.75



# Occupational Projections

*DLLR's Division of Workforce Development and Adult Learning*

Computer and Mathematical Occupations - Maryland Occupational Projections - 2010-2020

	Occ. Code	Occupational Title	Employment			Openings	
			2010	2020	Change	Replacement	Total
<b>MAJOR GROUP</b>	15-0000	Computer and Mathematical Occupations	108,960	134,225	25,265	21,025	46,290
<b>MINOR GROUP</b>	15-1000	Computer Specialists	102,705	126,235	23,530	17,930	41,460
	15-1111	Computer and Information Research Scientists	2,975	3,635	655	560	1,215
	15-1121	Computer Systems Analysts	13,570	16,520	2,950	2,545	5,495
	15-1131	Computer Programmers	7,205	7,985	780	1,675	2,455
	15-1132	Software Developers, Applications	11,760	14,875	3,120	1,225	4,340
	15-1133	Software Developers, Systems Software	14,025	19,035	5,010	1,460	6,470
	15-1141	Database Administrators	3,260	4,295	1,030	550	1,580
	15-1142	Network and computer systems architects and administrators	9,400	12,095	2,695	1,590	4,285
	15-1150	Computer Support Specialists	15,635	18,415	2,780	4,105	6,885
	15-1179	Information Security Analysts, Web Developers, and Computer Network Architects	10,975	13,585	2,610	1,620	4,235
<b>MINOR GROUP</b>	15-1799	Computer Occupations, All Other	13,895	15,790	1,895	2,605	4,500
	15-2000	Mathematical Scientists	6,255	7,990	1,730	3,100	4,830
	15-2011	Actuaries	320	360	40	195	230
	15-2021	Mathematicians	315	400	90	190	275
	15-2031	Operations Research Analysts	2,385	2,780	395	760	1,155
	15-2041	Statisticians	3,165	4,370	1,200	1,910	3,115

# What are the *HOT* jobs ?

- **Largest jobs** – most common jobs in economy
- **Most growth** – largest number of openings due to growth (adding the most jobs)
- **Most openings** - largest total number of openings (growth & separations combined)
- **Fastest growth** – highest growth rate



# Largest jobs projected in Maryland - 2020

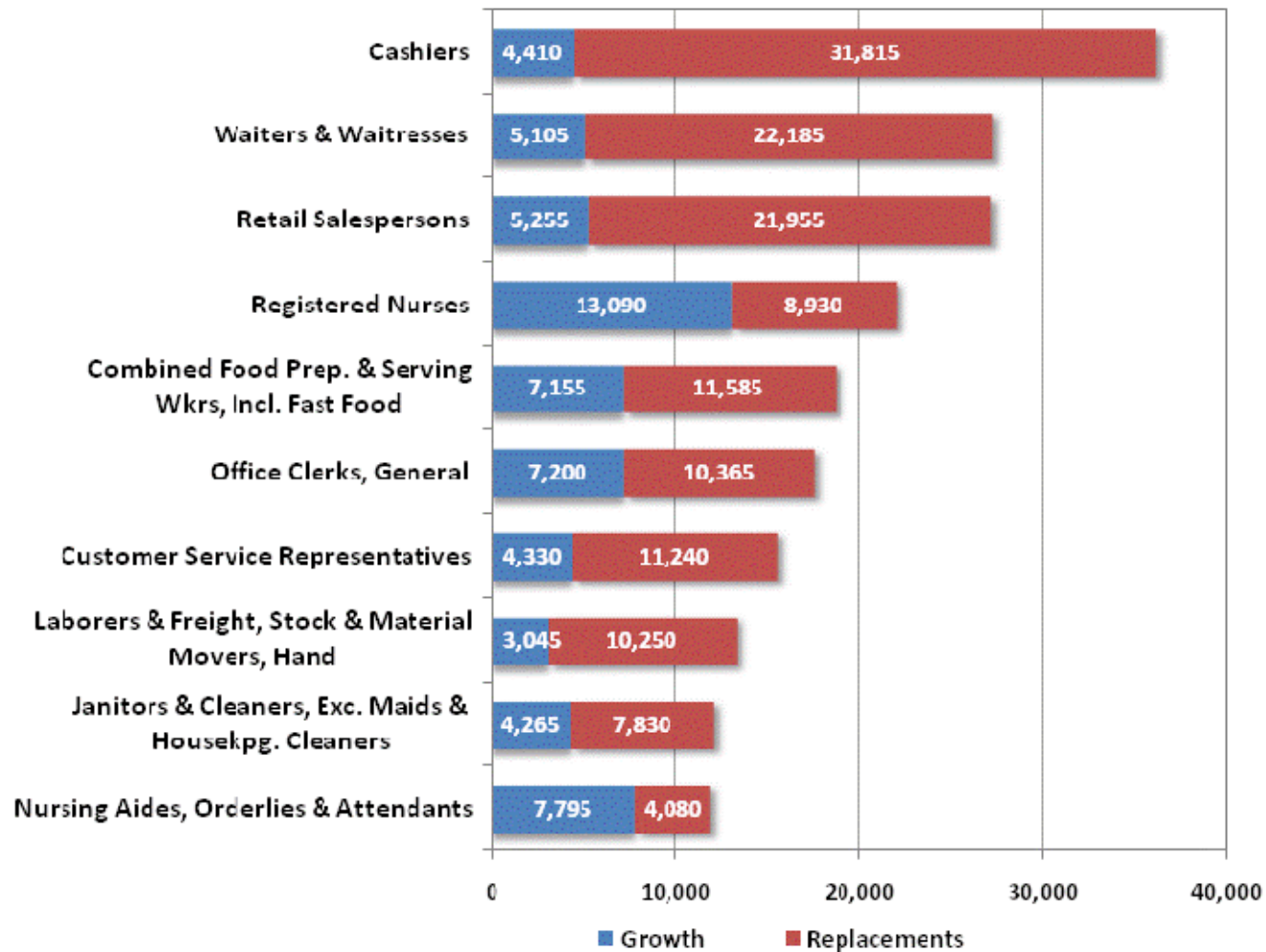
<b>Retail Salespersons</b>	<b>80,000</b>
<b>Cashiers</b>	<b>74,525</b>
<b>Office Clerks, General</b>	<b>65,800</b>
<b>Registered Nurses</b>	<b>62,425</b>
<b>General &amp; Operations Managers</b>	<b>53,155</b>
<b>Waiters &amp; Waitresses</b>	<b>49,545</b>
<b>Combined Food Preparation &amp; Serving Workers, Including Fast Food</b>	<b>48,670</b>
<b>Janitors &amp; Cleaners, Except Maids &amp; Housekeeping Cleaners</b>	<b>45,805</b>
<b>Secretaries, Except Legal, Medical &amp; Executive</b>	<b>45,285</b>
<b>Customer Service Representatives</b>	<b>43,900</b>
<b>Nursing Aides, Orderlies &amp; Attendants</b>	<b>39,435</b>
<b>Laborers &amp; Freight, Stock &amp; Material Movers, Hand</b>	<b>35,110</b>
<b>First-Line Suprs/Mgrs of Retail Sales Workers</b>	<b>33,525</b>
<b>Management Analysts</b>	<b>32,750</b>
<b>Stock Clerks and Order Fillers</b>	<b>32,740</b>
<b>Security Guards</b>	<b>31,375</b>
<b>First-Line Suprs/Mgrs of Office &amp; Administrative Support Workers</b>	<b>30,185</b>
<b>Bookkeeping, Accounting &amp; Auditing Clerks</b>	<b>30,055</b>
<b>Accountants &amp; Auditors</b>	<b>27,980</b>

# Occupations projected to have the most growth in Maryland 2010-2020

Registered Nurses	13,090
Nursing Aides, Orderlies & Attendants	7,795
Office Clerks, General	7,200
Combined Food Preparation & Serving Workers, Including Fast Food	7,155
Home Health Aides	6,855
Management Analysts	6,410
Retail Salespersons	5,255
Landscaping & Groundskeeping Workers	5,230
Personal & Home Care Aides	5,155
Waiters & Waitresses	5,105
Software Developers, Systems Software	5,010
Security Guards	4,880
Cashiers	4,410
Customer Service Representatives	4,330
Janitors & Cleaners, Except Maids & Housekeeping Cleaners	4,265
Receptionists & Information Clerks	3,870
Medical Secretaries	3,705
Software Developers, Applications	3,120
Laborers & Freight, Stock & Material Movers, Hand	3,045
First-Line Suprs/Mgrs of Office & Administrative Support Workers	2,975



# Occupations projected to have the most total openings in Maryland 2010-2020



# Fastest growing jobs in Maryland

	Projected Employment 2020	2010-2020 Job Change	Growth Rate	Education Required
Biomedical Engineers	675	280	71.8%	Bachelor's degree
Home Health Aides	18,420	6,855	59.2%	Less than high school
Personal & Home Care Aides	14,685	5,155	54.1%	Less than high school
Occupational Therapist Assistants	735	245	50.0%	Associate's degree
Physical Therapist Aides	2,115	650	44.5%	High school or equivalent
Physical Therapist Assistants	1,905	585	44.3%	Associate's degree
Diagnostic Medical Sonographers	1,480	445	42.8%	Associate's degree
Interpreters & Translators	1,215	360	42.1%	Bachelor's degree
Transportation Security Screeners	880	260	41.6%	High school or equivalent
Veterinary Technologists & Technicians	3,285	965	41.6%	Associate's degree

**Average growth rate for all occupations in Maryland: 12.3%**

# Where to find it all...

**MARYLAND** DEPARTMENT OF LABOR, LICENSING AND REGULATION

Search [ ] E-mail Friend [ ] Print Page [ ]

WD & AL HOME JOBS LABOR MARKET WIA ADULT ED/GED CORRECTIONAL ED

**LINKS**

- DLLR Home
- Press Room
- Proposed, Emergency & Final Regulations
- Unemployment Insurance
- Occupational & Professional Licensing
- Labor & Industry
- Workforce Development & Adult Learning
- Financial Regulation
- Racing
- Governor's Workforce Investment Board
- Maryland Workforce Exchange Services
- Ayuda en español
- Inside DLLR

[Follow us on Facebook](#)

**DLLR's Division of Workforce Development and Adult Learning**

Career and Workforce Information - Office of Workforce Information and Performance

**NEW!** [LMAI Customer Satisfaction Survey](#) **NEW!**

[Monthly Labor Review - February 2013](#)

[Weekly Claims for Unemployment Insurance Benefits](#)

[Release Dates - Monthly Labor Force and Industry Statistics](#)

**LABOR FORCE STATISTICS**

- [Employment, Unemployment and Unemployment Rate \(LAUS\)](#)
- [Labor Force Estimates by Workforce Investment Area \(WIA\)](#)
- [Monthly Labor Review](#)
- [Fact Sheets by Workforce Investment Area \(WIA\) and County](#)
- [Maryland and Regional Market View](#)
- [Labor Force, Demographic and Jobs Overview](#)

**INDUSTRY**

- [Employment and Payrolls](#)
- [Growth Industries by Workforce Areas](#)
- [Nonagricultural Wage and Salary Employment \(CES\)](#)
- [Monthly Labor Review](#)
- [Major Employer List for the State - March 2011](#)
- [Major Employer Lists for the Counties - March 2011](#)

# Where to find it all...

## OCCUPATION

- [2011-2013 Maryland Occupational and Industry Projections](#)
- [2010-2020 Maryland Occupational and Industry Projections](#)
- [2008-2018 Workforce Investment Area \(WIA\) Occupational Projections](#)
- [Occupational Outlook \(2008 - 2018\) by Workforce Investment Area \(WIA\)](#)

[Who's Working in Maryland: An Overview of the State's Private Sector Workforce](#)

[Glossary of Terms](#)

[Program Information Sheets](#)

[Mass Layoff Statistics Report](#)


## WAGES


- [Maryland and Regional Occupational Wage Data \(OES\)](#)
- [Employment and Payrolls](#)
- [Commuting Patterns](#)

[Business Employment Dynamics \(BED\)](#)

[LMAI/Census Workforce Indicators \(LED\)](#)

[Characteristics of Claimants](#)

[Maryland Job Creation Report](#)  (PDF document, 591KB, [download Adobe Acrobat for free](#))

[Maps of Maryland Employment Dynamics before, during, and after the Recession](#)  (PDF document, 1.9MB, [download Adobe Acrobat for free](#))



[Bureau of Labor Statistics](#)



# Where to find it all...

The screenshot shows the homepage of the Maryland Workforce Exchange. At the top, it features the Maryland state logo and the text 'DEPARTMENT OF LABOR, LICENSING AND REGULATION' and 'Maryland Workforce Exchange'. A search bar is located in the top right corner. Below the header is a large banner image showing a woman in a lab coat, a man in a hard hat carrying a box, and a man in a suit. To the right of the banner are logos for 'DLLR' (Department of Labor, Licensing and Regulation), 'Office of the GOVERNOR', and 'MARYLAND JOBS NOW'. A login section with 'Username' and 'Password' fields and a 'Sign In' button is present. The main content area is divided into several sections: 'Search for Jobs' with input fields for keyword, city, and ZIP code; 'Job Seekers' and 'Employers' sections with lists of services like 'Find a Job', 'Create a Resume', and 'Post a Job Opening'; 'Labor Market Information' with links to 'LMI Home', 'Area Profile', 'Occupation Profile', 'Industry Profile', 'Demographics', and 'Publications'; and 'Targeted JOB Searches' with categories like 'Cyber Security JOBS', 'BWI Marshall Airport JOBS', 'Apprenticeship Training JOBS', and 'Veteran JOBS'. There is also an 'Additional JOB Seeker Services' section with links to 'MARC Regional Green JOBS', 'Veteran Priority Services', and 'Military 2 Federal JOBS'. A yellow arrow points from the left towards the 'Labor Market Information' section.

# Where to find it all...

- My Workspace**
  - Directory of Services
- Quick Menu**
  - Labor Market Facts
  - Job Search
  - Labor Market Analysis
- Current Data Analysis**
  - Area Profile >
  - Occupation Profile >
  - Industry Profile >
  - Comparisons >
  - Education and Training Data >
  - Employers >
  - Area Specific Data >
  - Industry Specific Data >
  - Occupation Specific Data >
- Historical Data Analysis**
  - Advertised Job Data >
  - Supply and Demand >
  - Employment and Wage Data >
  - Demographics >
- Other services**

## Welcome to Maryland's Source for Labor Market Information

The most up-to-date information available on unemployment, wages, jobs and training to help you make decisions! For more information or questions about our data, please contact our labor market analysts by phone at 410-767-2250, or by email at [Imai@dllr.state.md.us](mailto:Imai@dllr.state.md.us)

### Labor Market Data


Research labor market, economic and demographic data and compare information over time and between regions.



- [Labor Force Data](#)
- [Industry Data](#)
- [Occupation Data](#)
- [Demographics](#)
- [Data Download Center](#)

### Students and Youth

Below are some resources that will help you explore finding careers that match your skills and education.



- [Career Finder](#)
- [CareerSmarts](#)
- [Assess Yourself](#)
- [Skills Search](#)
- [Tools and Technology](#)
- [Research Employers](#)

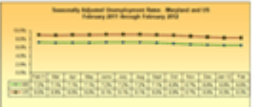
[More](#)

### Press Releases

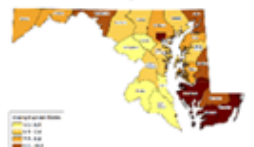
[Current Press Release](#)  
[Monthly Labor Review](#)  
[Press Release Publication Schedule](#)

## Unemployment Rates

	Feb-13	Jan -12	Feb -12
Maryland	6.9%	7.2%	7.2%
Seasonally Adjusted	6.6%	6.7%	6.7%
United States	8.1%	8.5%	8.7%
Seasonally Adjusted	7.7%	7.9%	8.3%



**View Graph**



**View Map**

### Publications

Maryland's Office of Workforce Information and Performance produces several publications. A few of them include:



- [Maryland and Regional Market View](#)
- [Business Employment Dynamics](#)
- [Who's Working in Maryland: The State's Private Sector Workforce](#)
- [Commuting Patterns](#)
- [Maryland Job Creation Report](#)
- [Characteristics of Claimants](#)

[More](#)

### Career Exploration and Job Search Resources

Below are some resources that will help you to research careers, jobs and find labor market information about specific occupations.



- [Career Services](#)
- [View Available Job Openings](#)
- [O\\*Net Online](#)
- [Occupational Supply and Demand](#)
- [Apprenticeships](#)
- [Occupation Outlook Handbook](#)
- [BLS Career Information](#)
- [Career InfoNet](#)

[More](#)



LED OnTheMap



Bureau of Labor Statistics



Bureau of Economic Analysis



Databases, Tables and Calculators by Subject



Resource Library



Follow DLLR

# Federal Government Resources

## [www.bls.gov](http://www.bls.gov)

Occupational Outlook Handbook

Career Guide to Industries

Occupational Outlook Quarterly

Monthly Labor Review

Beyond the Numbers (brief occasional reports)



## [www.doleta.gov](http://www.doleta.gov)

- information for jobseekers, the unemployed, career and workforce development professionals
- links to web-based tools for job search and career planning

**+ many other job market studies & special reports  
from BLS & the Census Bureau**

## For further information:

### Office of Workforce Information & Performance

[www.dllr.maryland.gov/lmi](http://www.dllr.maryland.gov/lmi)

E-mail: [Imai@dllr.state.md.us](mailto:Imai@dllr.state.md.us)

Phone: 410-767-2250

Fax: 410-767-2219

Dolores Paunil

E-mail: [dpaunil@dllr.state.md.us](mailto:dpaunil@dllr.state.md.us)

Phone: 410-767-2281

